

## **Installation and user guide for E21 Apk Calibration.**

This user manual is to guide the personnel of Service Center to operate the Apk Calibration for E21

Calibration apk is needed to perform calibration of hardware components including Touch Panel, Proximity Sensor and Light Sensor on E21 devices.

This manual will describe the operation steps of calibration in sequence of Touch Panel, Proximity Sensor and Light Sensor.

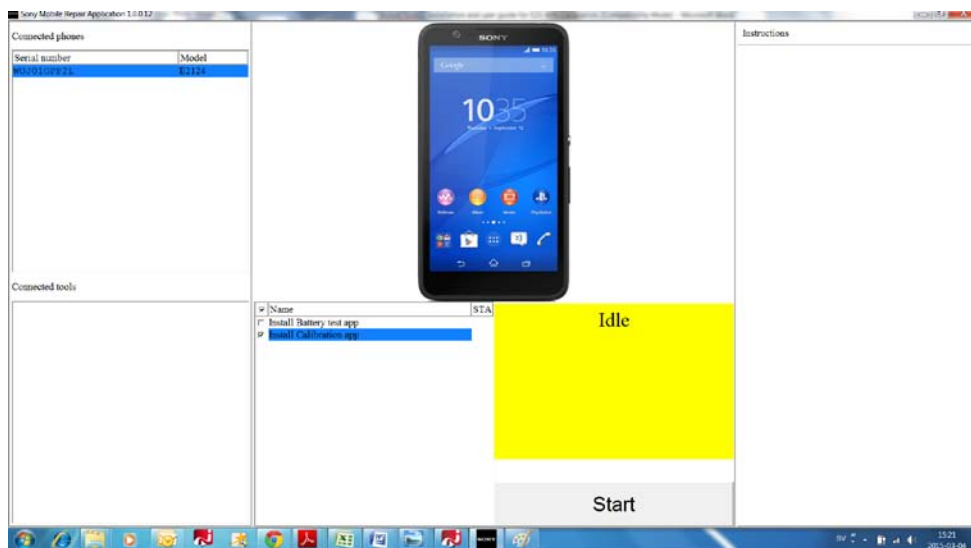
**Contents**

1	Operations.....	3
1.1	Install APK.....	3
1.2	Touch Panel .....	5
1.3	Proximity Sensor .....	7
1.4	Light Sensor .....	11
1.5	Uninstall APK. ....	13
1.6	Disable debug mode. ....	13

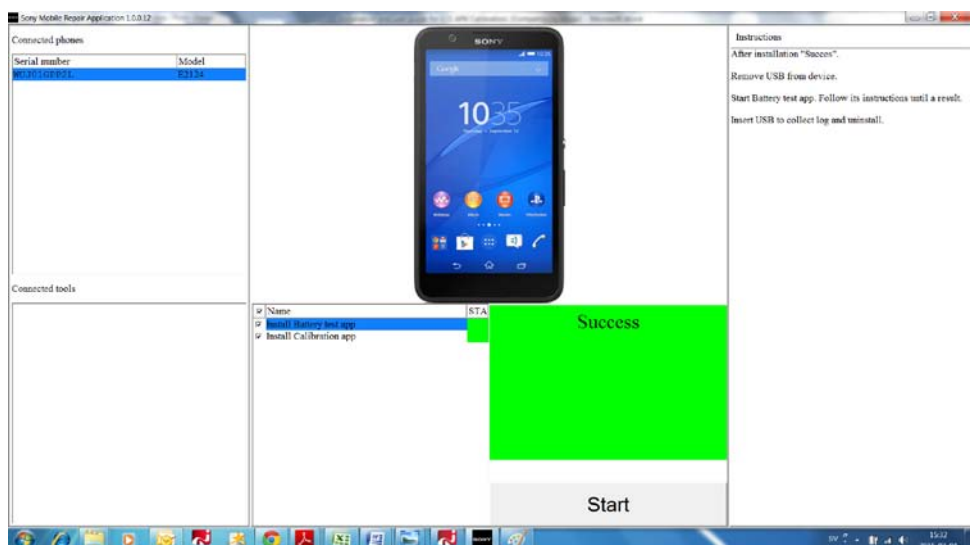
# 1 Operations

## 1.1 Install APK

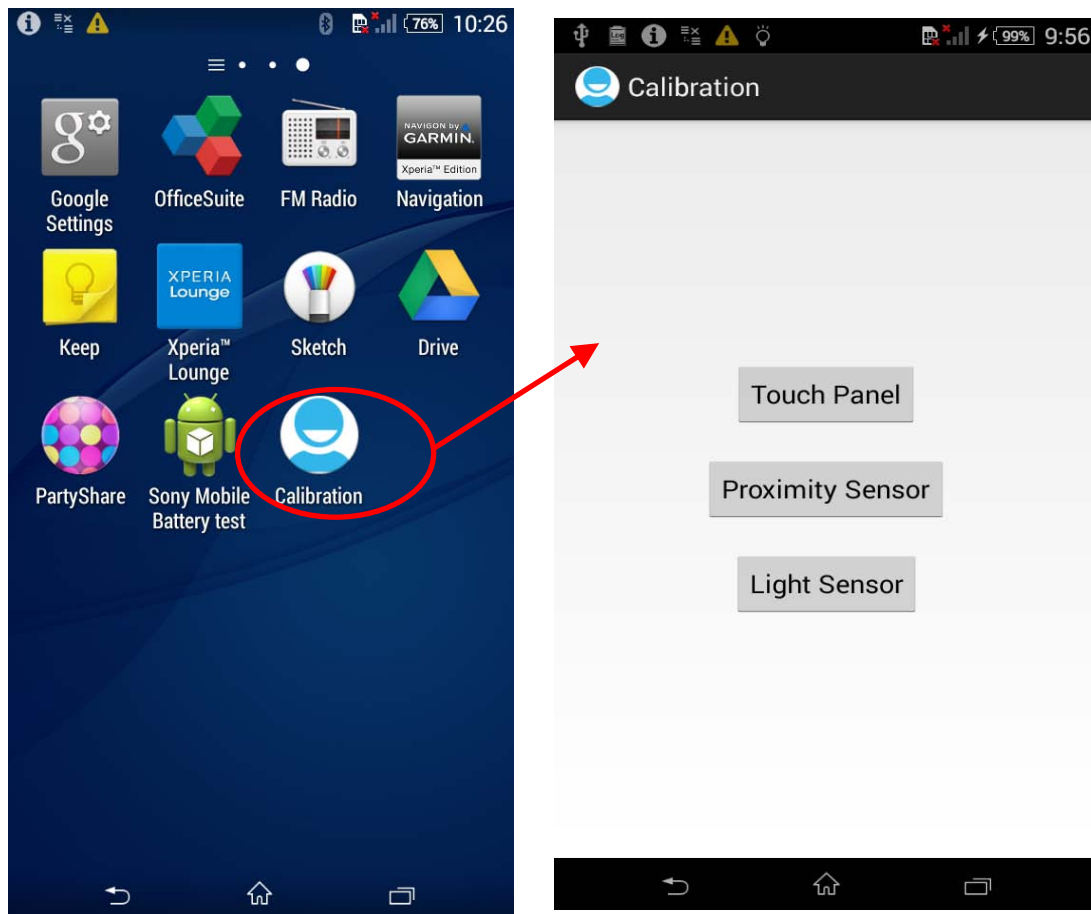
Enable USB debug mode in phone and connect to Sony Mobile Repair Application



Press **Start** to install Calibration app.  
When Success installation, then remove USB from device.

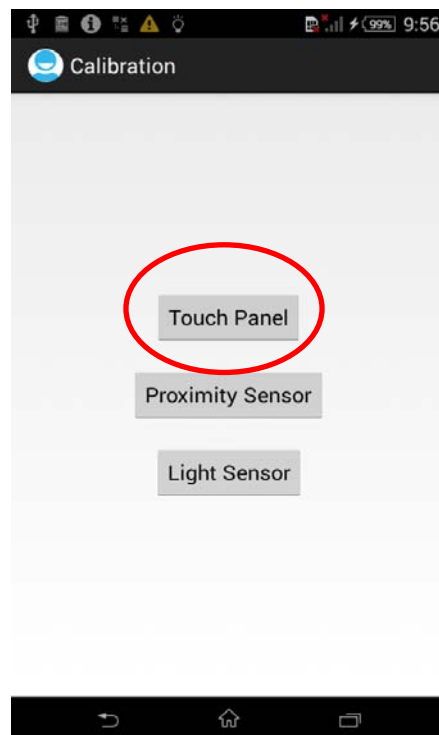


Press Calibration to enter Calibration menu.

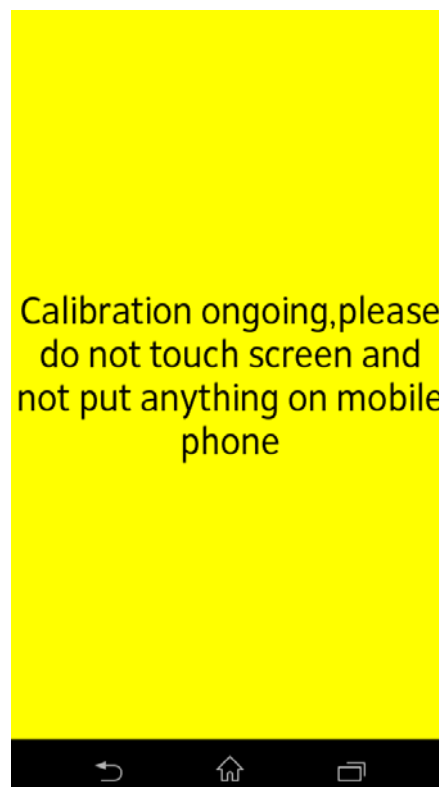


## 1.2 Touch Panel

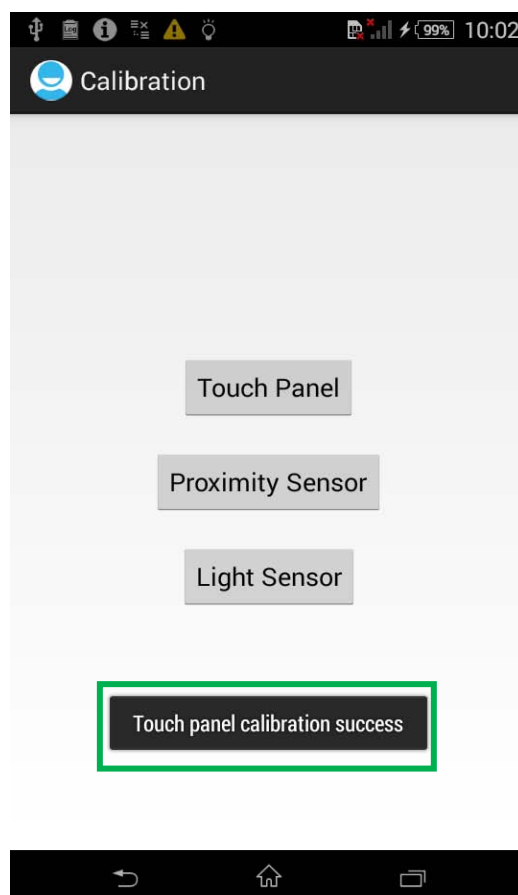
- (1) Select "Touch Panel" item in calibration main menu to enter the main page of Touch Panel calibration.



- (2) Calibration will start, do not touch screen or put anything on mobile phone.



- (3) After Touch panel calibration, the result will show  
**“Touch panel calibration success” or “Touch panel calibration fail”.**

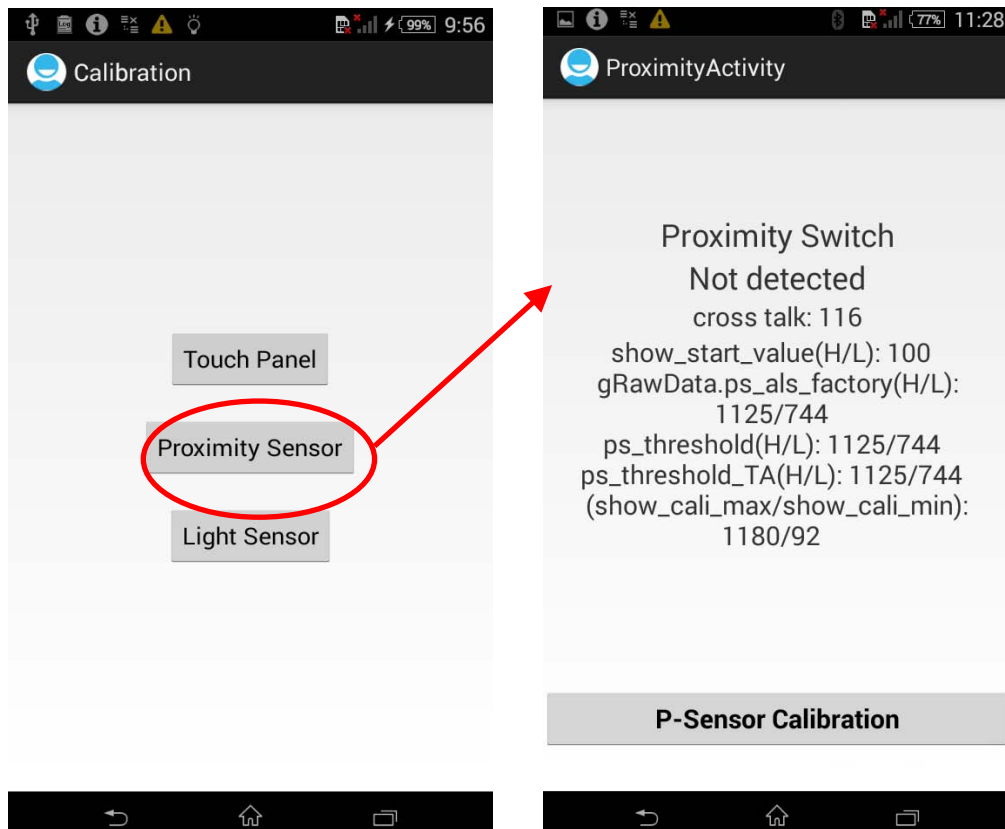


### 1.3 Proximity Sensor

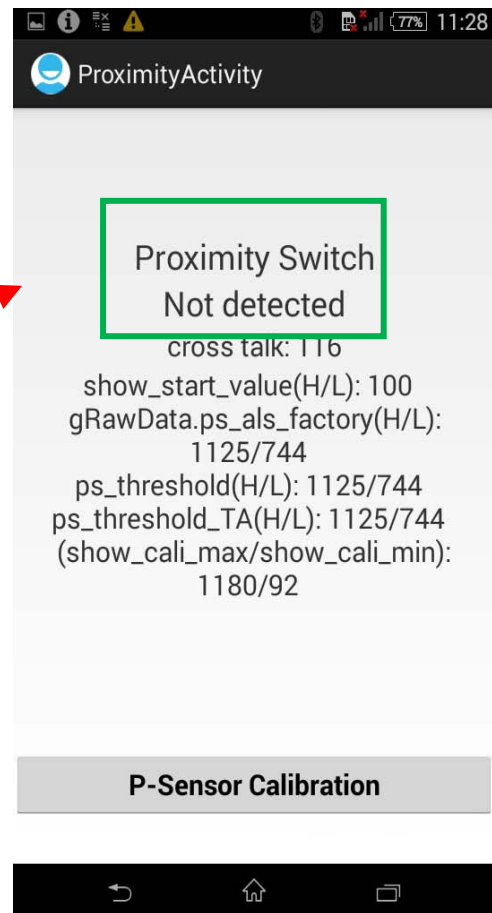
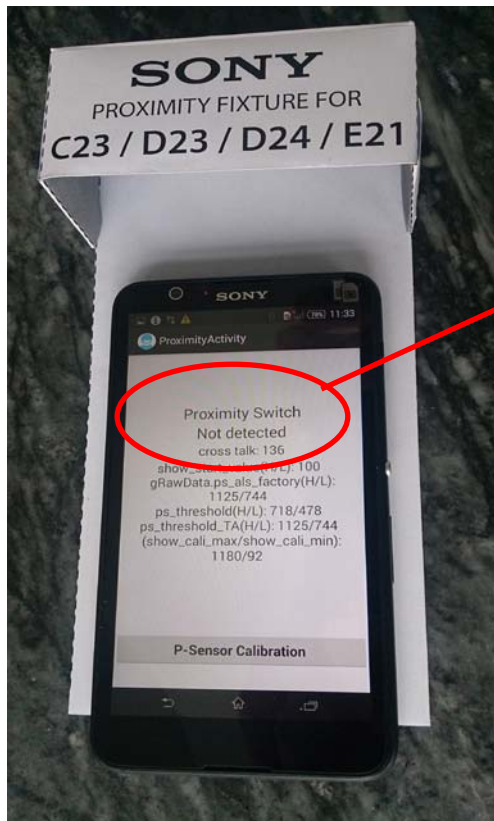
- (1) Prepare a Proximity fixture C23/D23/D24/E21 to cover the Proximity sensor by the distance of 3 cm above the device. (see below pictures for illustration)



- (2) Select "Proximity Sensor" item in calibration main menu to enter the page of Proximity Activity.

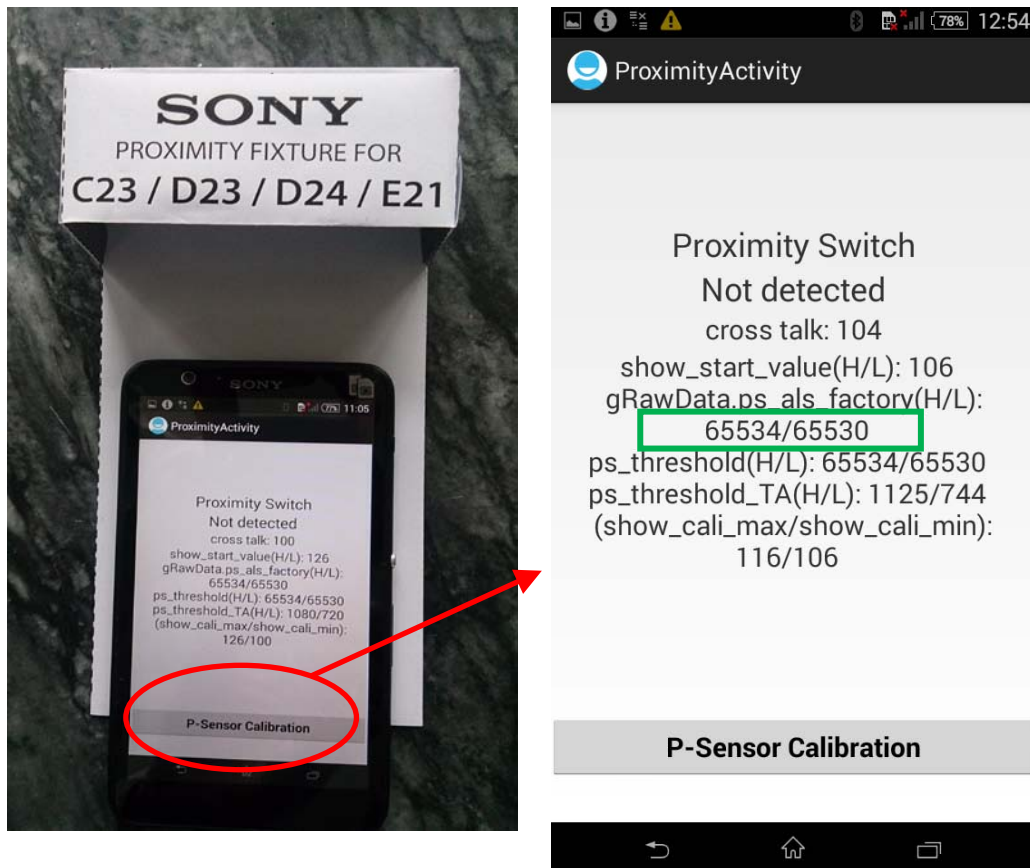


(3) Place phone **outside** fixture, Proximity Switch **Not detected**

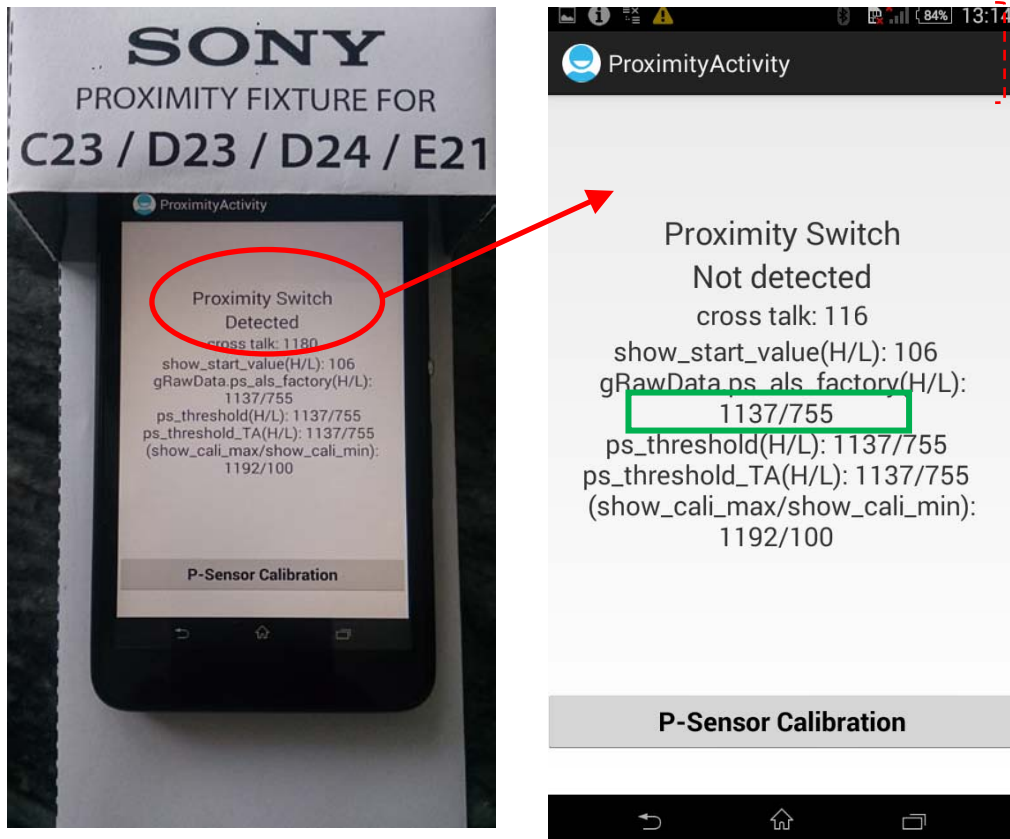




- (4) When phone is **outside** fixture then press P-Sensor Calibration.  
Factory (H/L) value will show 65534/65530



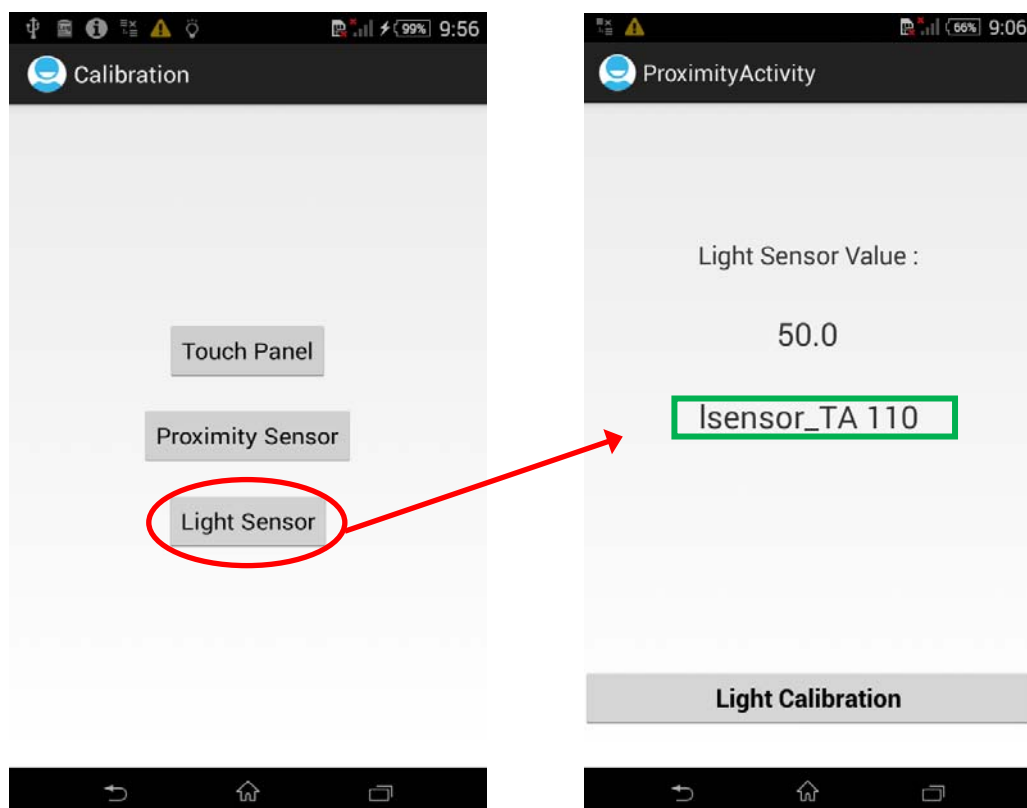
- (5) Then move phone inside fixture, after 1 sec the phone will detect fixture and calibrate to new factory (H/L). In this case 1137/755



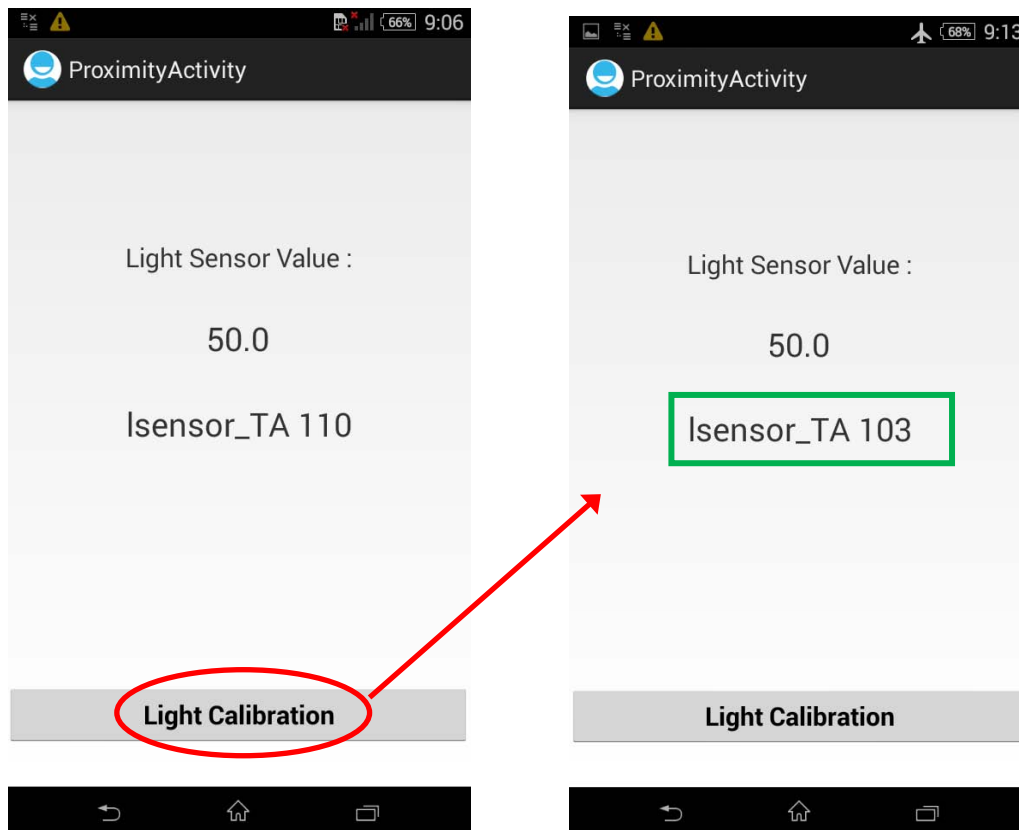
- (6) Press return button to exit proximity calibration

## 1.4 Light Sensor

- (1) Select "Light Sensor" item in calibration main menu to enter the main page of Light Sensor calibration.  
Isensor\_TA are current factory value in this case **110**



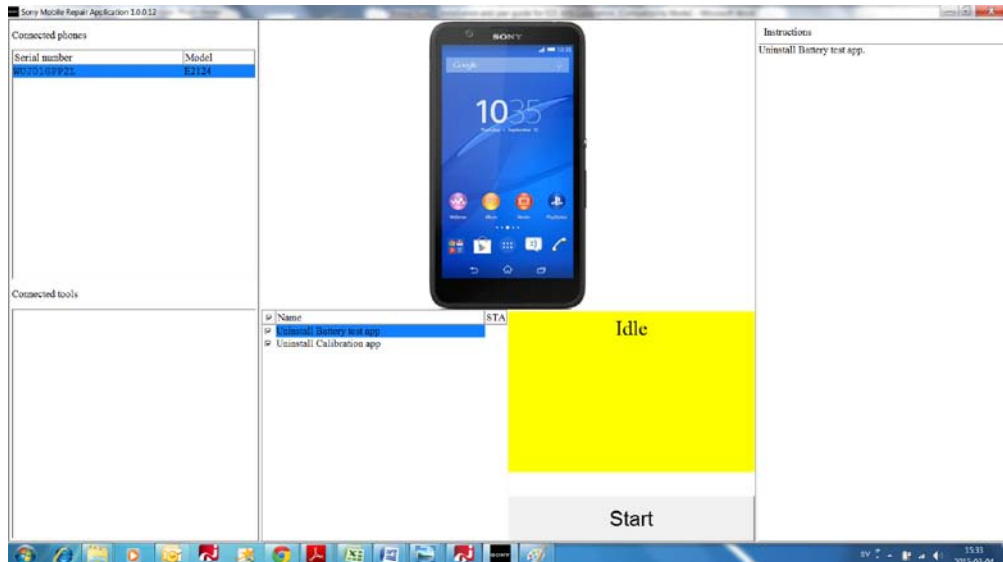
- (2) Press Light Calibration to select and store default value **103**  
When Value 103 is displayed then settings are done.



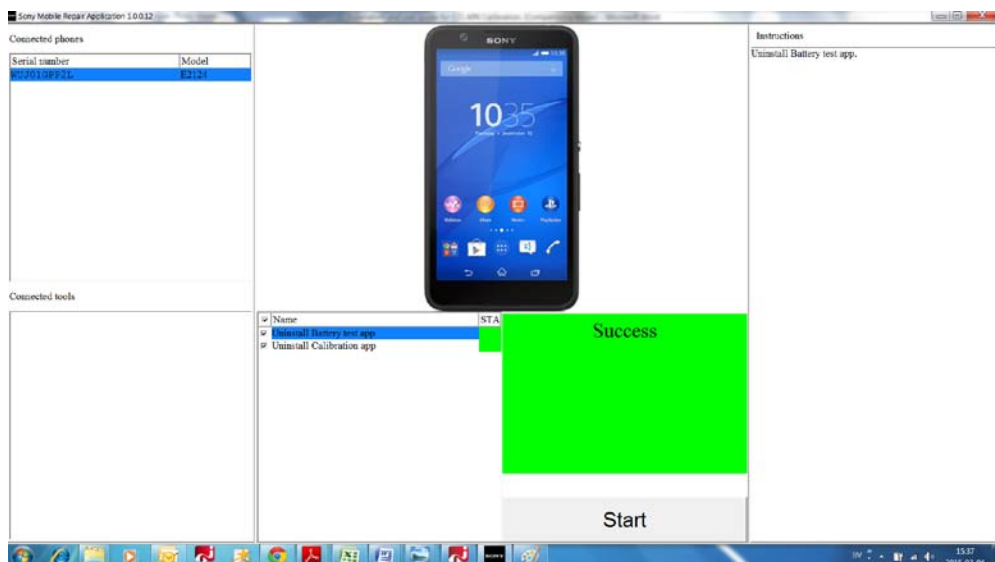
- (4) Press return button to exit Light Sensor calibration

## 1.5 Uninstall APK.

After calibration connect phone to Sony Mobile Repair Application.



Press **Start** to Uninstall Calibration app.  
When Success Uninstallation, then remove USB from device.



## 1.6 Disable debug mode.

Remember to disable debug mode in phone.